

## EasyGate WN

The EasyGate WN is a robust turnstile solution designed for all weather applications. Specifically designed for use with a Bike or Motorcycle the EasyGate WN is suitable for internal or external applications.

### MAIN FEATURES

- Robust stainless steel construction
- Sophisticated detection system for user and bike/ motorcycles\*
- For use with or without a bike/motorcycle
- Internal or external applications – IP65 Rated
- Extreme all-weather package -40°C to +50°C\*

\*Optional feature

### DIMENSIONS

Cabinet height: 1070mm  
 Cabinet length: 2000mm  
 Cabinet width: 210mm  
 Barrier height: 900mm

### NUMBER OF WINGS

1 Wing/ 2 Wings

### PASSAGE WIDTH

#### 1 wing

Standard width: 600mm  
 Max Passage width: 600mm

#### 2 wings

Standard width: 650mm  
 Max Passage width: 1200mm

### BASE AND HOUSING

Brushed Stainless Steel

### TOP LID

Brushed Stainless Steel

### BARRIER

Stainless Steel Tube Wing



### POWER SUPPLY

13.8V DC/ 24V AC

### COMMUNICATION INTERFACE

RS-232/ USB/ Ethernet

### NUMBER OF SENSORS

8 pairs

### TAILGATING AND CROSS OVER DETECTION

Yes

### CLIMB OVER DETECTION

Yes - electronic detection

### RANGE OF OPERATING TEMPERATURE

-40°C to +50°C

### OPERATING ENVIRONMENT

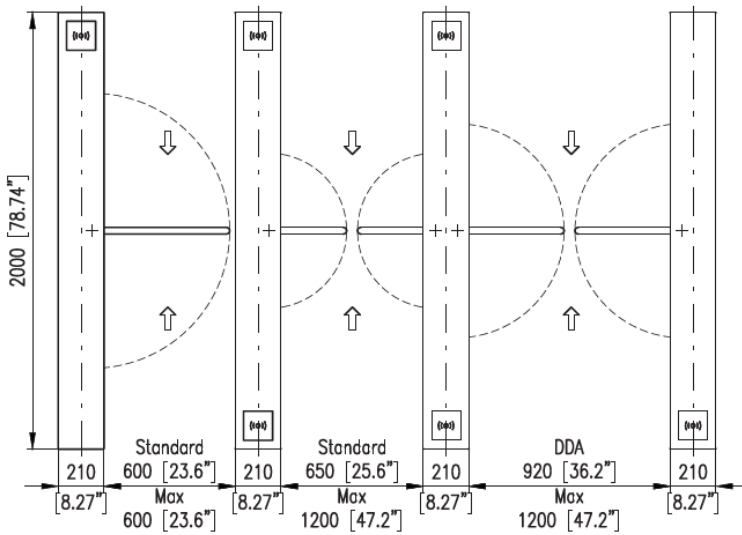
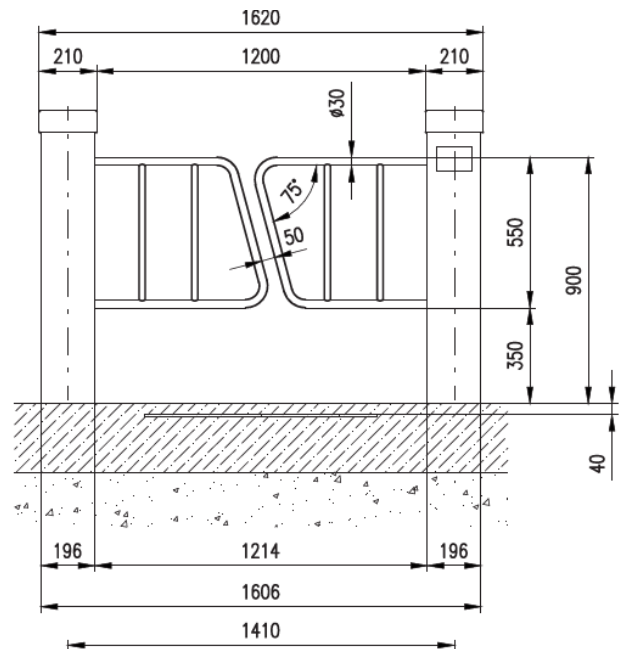
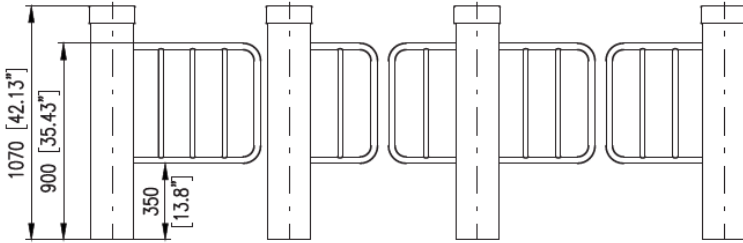
Indoor

### EMERGENCY MODE

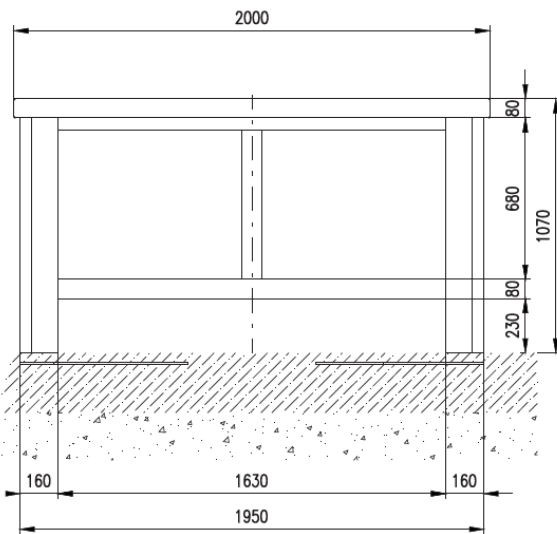
Open manually or automatically  
 (with power backup)

## OPTIONAL ACCESSORIES

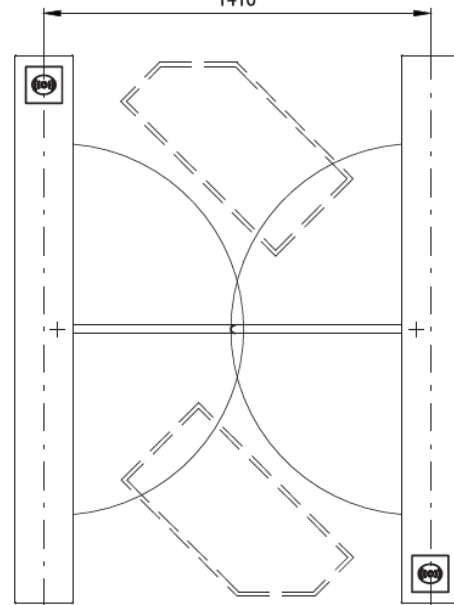
- LED Lane Light
- Integrated 3<sup>rd</sup> party terminals
- Custom Base and Housing – RAL powder coated steel. Black/ Gold/ Bronze stainless steel
- Extreme all-weather package
- Induction loop system – for detection of bike/ motorcycles



EasyGate WN passage widths



EasyGate WN with Inductive loop



EasyGate WN with Inductive loop

As our policy is to continually improve the products we offer, we reserve the right to amend specifications without prior notice. Further product drawings are available on request