

**NOTE:**

GENERAL CONSTRUCTION  
TOLERANCE: ± 5 mm [± 0.2"]

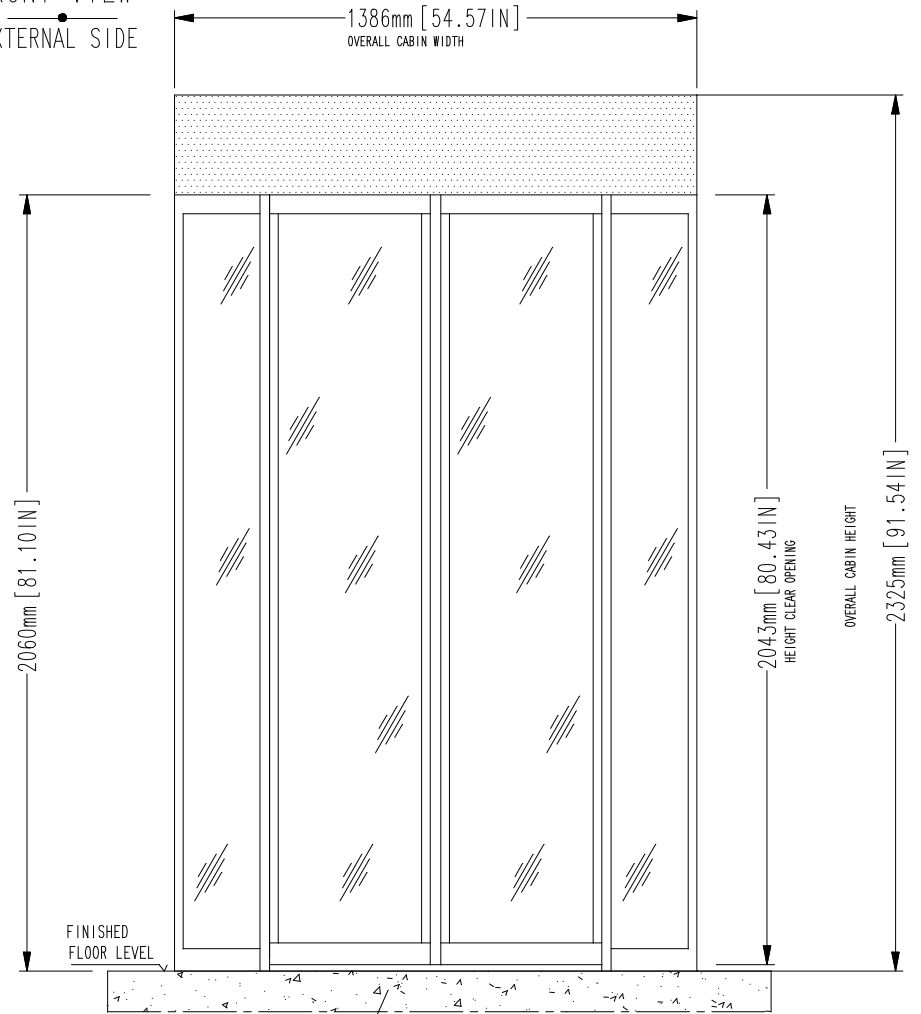
**INSTALLATION REQUIREMENT**

SPACE FOR MAINTENANCE  
ABOVE TOP OF THE CABIN ON  
THE INTERNAL SIDE:

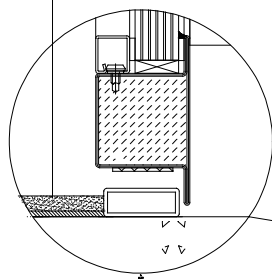
- \*MIN. 300 mm [11.81"]
- \*RECOMMENDED 750 mm [29.53"]

\*if space does not meet the  
required specifications contact  
us to discuss alternatives

**FRONT VIEW**  
EXTERNAL SIDE



PLASTIC FLOOR FINISHING

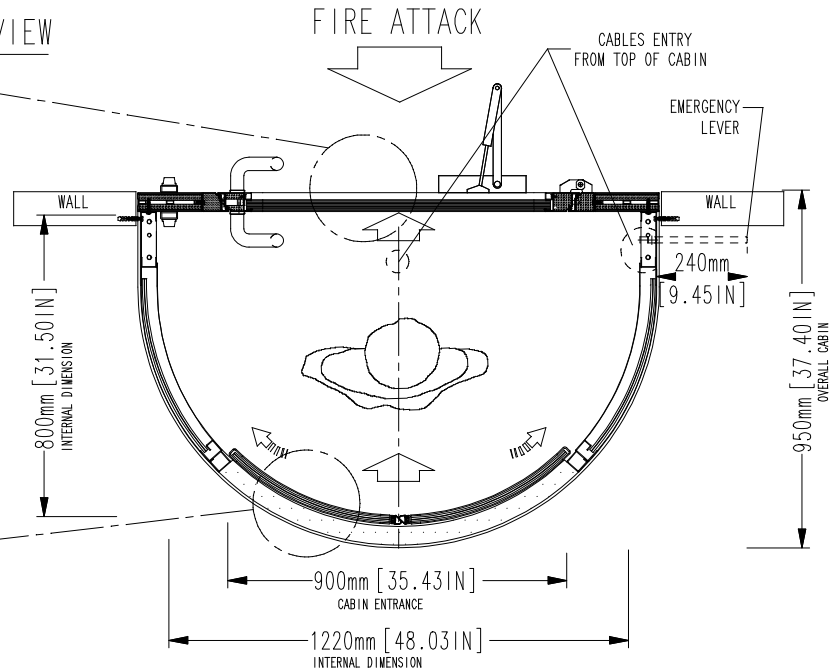


15mm [0.59IN]

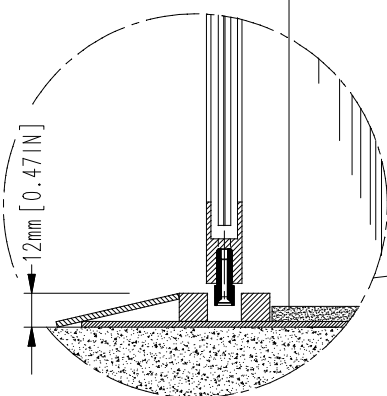
**TOP VIEW**

INTERNAL  
SIDE

EXTERNAL  
SIDE



PLASTIC FLOOR FINISHING



DRAWING NUMBER  
**EARC-317**  
PAGE 1 OF 1

DRAWN BY  
**L. BERTAZZO**  
APPROVED BY  
**ALLUSER**

DATE  
**09/11/2015**  
PRINTING SCALE  
**1:20**

**alluser**  
INDUSTRIE  
**designed for your security**

**MEESONS**  
SAFE SECURE ACCESS

Cardea House  
Sidings Business Park  
Skipton  
BD23 1TB  
01756 797727

THIS DOCUMENT IS AN ALLUSER INDUSTRIE PROPERTY AND IT CANNOT BE COPIED OR TRANSFERRED TO THIRD PARTIES WITHOUT A PREVIOUS WRITTEN AUTHORIZATION. DUE TO OUR POLICY OF CONTINUOUS PRODUCT DEVELOPMENT, ALL DIMENSIONS AND SPECIFICATIONS DESCRIBED IN THIS DOCUMENT ARE SUBJECT TO CHANGE WITHOUT NOTICE.

2	-	-	-
1			
REV.	REVISION DESCRIPTION	DATE	DRAWN BY

TITLE / DESCRIPTION  
**FPJ 140 - 1A, FLAT SIDE EI 120**  
 Flush mounted to floor (no recess required)  
 Overall dimensions and mechanical installation requirement