

Rexon Basic

The Rexon Basic is our entry level full height turnstile, designed to provide a cost effective motorised full height security solution. The Rexon basic is suitable as a pedestrian entrance for indoor and outdoor use with a range of accessories and finishes to suit your requirements.

MAIN FEATURES

- Cost effective entrance security
- 24/7 Unmanned access
- High level of safety
- Silent and smooth operation

DIMENSIONS

Unit height: 2435mm
Unit width: 1385mm
Passage height: 2040mm

NUMBER OF WINGS

3 Wings (120°)

PASSAGE WIDTH

Passage Width: 580mm

FRAME

Hot-dip zinc galvanised

CENTRAL COLUMN/ BARS

Hot-dip zinc galvanised

TOP PANEL

Hot-dip zinc galvanised

BARRIER TYPE

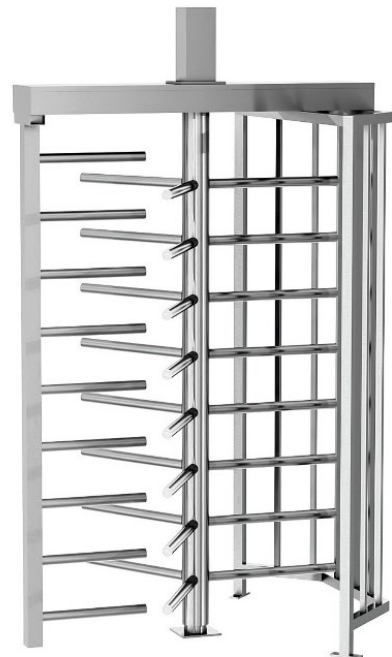
8 Tubular bars Ø 40mm (with black plastic covering caps)

POWER SUPPLY

13.8V DC/ 24V AC/ 230V AC

COMMUNICATION INTERFACE

RS485/ USB/ Ethernet



RANGE OF OPERATING TEMPERATURE

-20°C to +50°C (IP 65)

OPERATING MODES

Operating modes can be configured in either direction.

1. Free Passage (in/out)
2. Access Controlled Passage
3. Permanently locked

OPERATING ENVIRONMENT

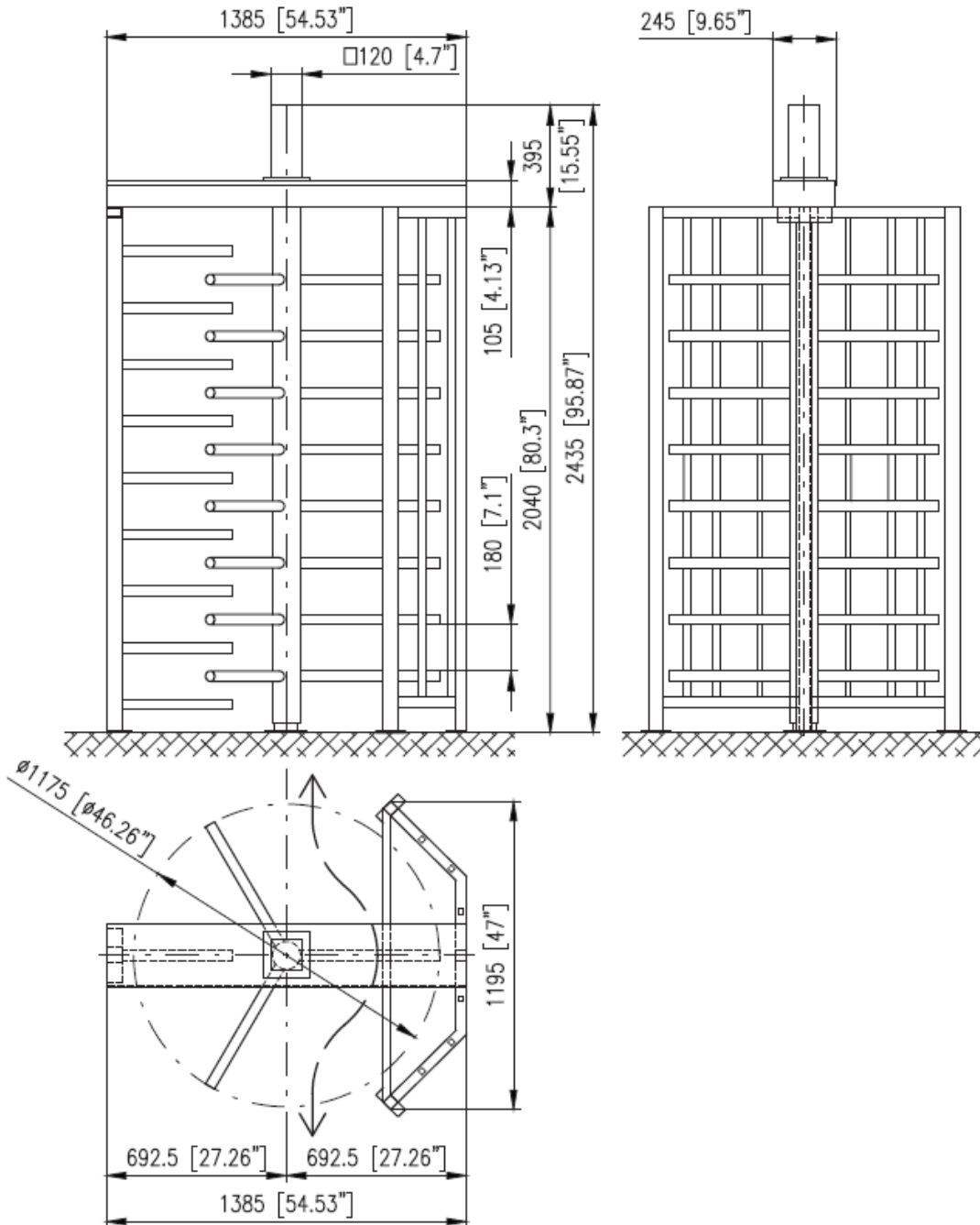
Indoor/ outdoor

EMERGENCY MODE

On emergency release Fail Safe will put the turnstile into free flow in both directions

OPTIONAL ACCESSORIES

- LED lane light
- Integrated 3rd party terminals
- Access panel
- Passageway light
- Ramp LT
- Roof
- Mounting frame



As our policy is to continually improve the products we offer, we reserve the right to amend specifications without prior notice. Further product drawings are available on request