

Rexon DEA 3 Gate

The Rexon DEA 3 Gate is a full height single passage turnstile with integrated pass gate. With its solid robust construction and the Rexon DEA 3 Gate is ideal for high security applications where the unmanned passage of people or goods is required. The Rexon DEA 3 Gate is available with either straight or trombone style bars.

MAIN FEATURES

- Robust steel construction
- Maximum security – dual brake system
- Integrated wide access gate
- Silent and smooth motor drive

DIMENSIONS

Unit height: 2465mm
Unit width: 2590mm
Passage height: 2100mm

NUMBER OF WINGS

3 Wings

PASSAGE WIDTH

Passage Width: 620mm

FRAME

Hot-dip zinc galvanised, powder coated finish in RAL Colour

CENTRAL COLUMN/ BARS

Hot-dip zinc galvanised - DEA 3 Gate
Polished stainless steel - DEA 3 Gate U

TOP PANEL

Hot-dip zinc galvanised, powder coated finish in RAL Colour

BARRIER TYPE

11 Tubular bars Ø 40mm (with black plastic covering caps) or 6 trombone style bars Ø 22mm

POWER SUPPLY

13.8V DC/ 24V AC/ 230V AC

COMMUNICATION INTERFACE

RS485/ USB/ Ethernet



RANGE OF OPERATING TEMPERATURE

-20°C to +50°C (IP 65)

OPERATING MODES

Operating modes can be configured in either direction.

1. Free Passage (in/out)
2. Access Controlled Passage
3. Permanently locked

OPERATING ENVIRONMENT

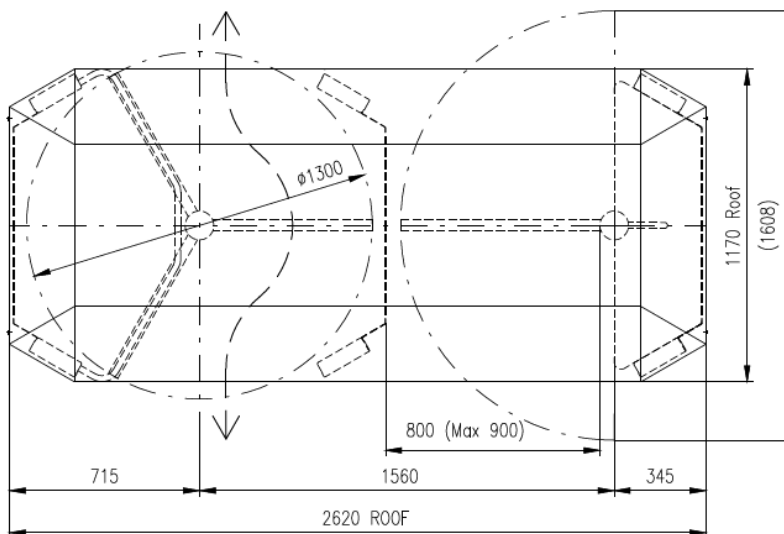
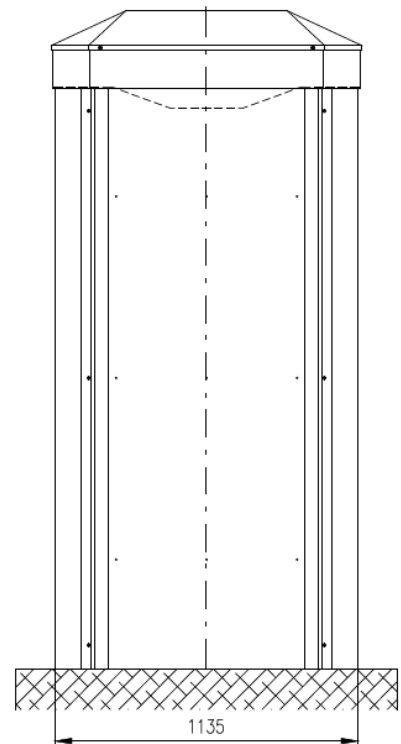
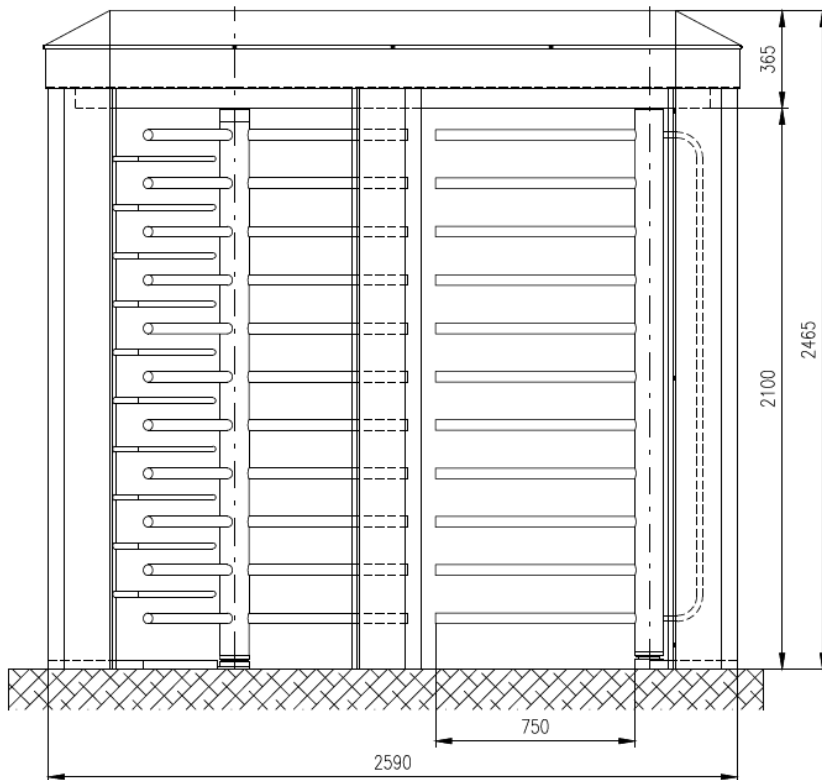
Indoor/ outdoor

EMERGENCY MODE

Rotates manually or automatically (with power backup)

OPTIONAL ACCESSORIES

- Additional electromagnetic brake to prevent unauthorised access.
- Columns and brackets for accessories
- Lighting – Lighting of turnstile walkway
- Traffic-light information panel
- Touch Panel Control – control of operating modes
- Backup battery – up to 6hrs operation
- Counter – optional external counter available or via T-MON
- Identification systems - Barcode, biometric sensors, smart cards etc.
- Heating unit – required for use in external applications
- Remote lane configuration, management and diagnostics via T-CONF software
- Complete stainless steel finish
- Custom RAL colours



As our policy is to continually improve the products we offer, we reserve the right to amend specifications without prior notice. Further product drawings are available on request