

Rexon ERA DUO 4-LE

The Rexon ERA DUO 4-LE is a full height turnstile with 4 wings designed for high security applications where the unmanned passage of people is required. The Rexon ERA DUO 4-LE is a compact dual turnstile solution suitable for high throughput areas with entry and exit side panels for increased security. With an anti-corrosive finish the Rexon ERA DUO 4-LE is suitable for both interior and exterior use.

MAIN FEATURES

- Space saving design
- Automatically adapts the rotation speed to the users
- Steel side panels for increased security
- Silent and smooth motor drive

DIMENSIONS

Unit height: 2520mm
Unit width: 2050mm
Passage height: 2100mm

NUMBER OF WINGS

4 Wings

PASSAGE WIDTH

Passage Width: 550mm

FRAME

Hot-dip zinc galvanised

CENTRAL COLUMN/ BARS

Hot-dip zinc galvanised

TOP PANEL

Hot-dip zinc galvanised, powder coated finish in RAL 7040

BARRIER TYPE

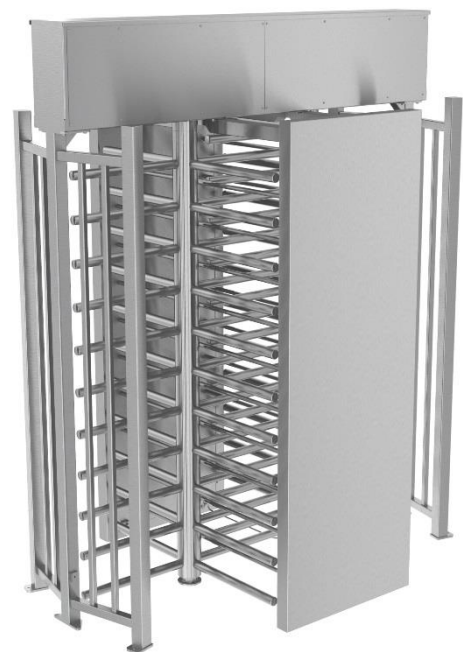
11 Tubular bars Ø 40mm

POWER SUPPLY

13.8V DC/ 24V AC/ 230V AC

COMMUNICATION INTERFACE

RS485/ USB/ Ethernet



RANGE OF OPERATING TEMPERATURE

-20°C to +50°C (IP 65)

-40°C to +60°C (IP 65) with Extreme outdoor package*

*Optional Feature

OPERATING MODES

Operating modes can be configured in either direction.

1. Free Passage (in/out)
2. Access Controlled Passage
3. Permanently locked

OPERATING ENVIRONMENT

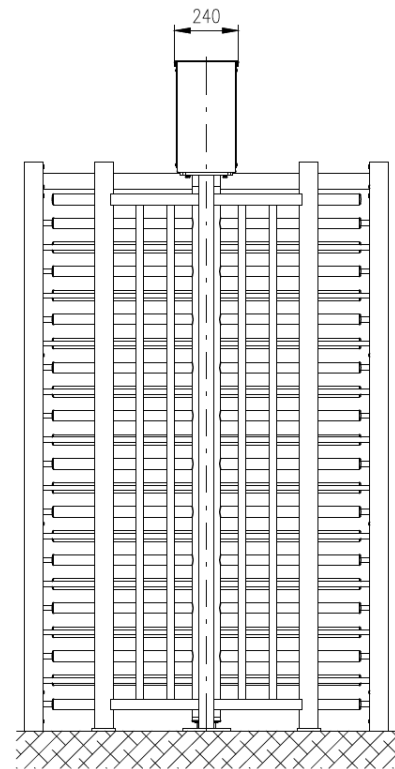
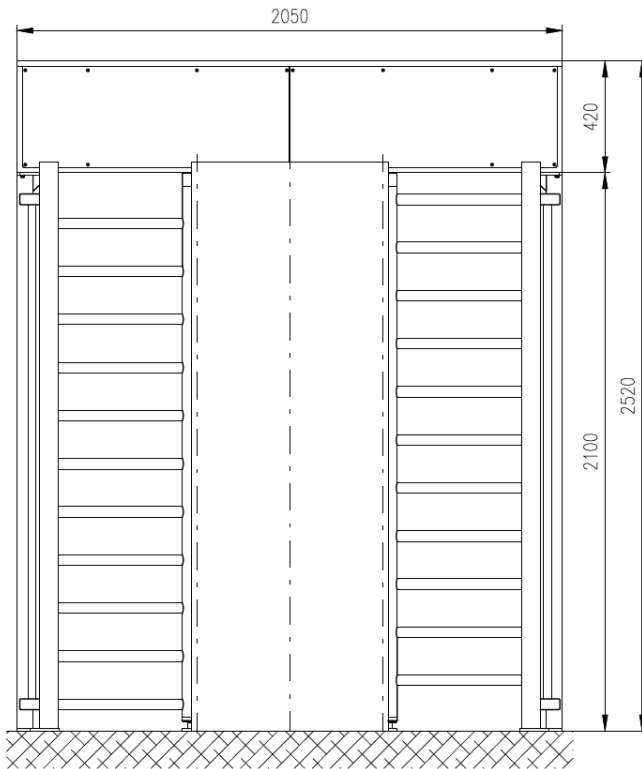
Indoor/ outdoor

EMERGENCY MODE

Rotates manually or automatically (with power backup)

OPTIONAL ACCESSORIES

- Additional electromagnetic brake to prevent unauthorised access.
- Columns and brackets for accessories
- Lighting – Lighting of turnstile walkway
- Traffic-light information panel
- Touch Panel Control – control of operating modes
- Backup battery – up to 6hrs operation
- Counter – optional external counter available or via T-MON
- Identification systems - Barcode, biometric sensors, smart cards etc.
- Canopy
- Heating unit – required for use in external applications
- Extreme outdoor package
- Remote lane configuration, management and diagnostics via T-CONF software
- Complete stainless steel finish
- Custom RAL colours



As our policy is to continually improve the products we offer, we reserve the right to amend specifications without prior notice. Further product drawings are available on request